



Wi-Fi 7

BE7200 Dual-Band Wi-Fi 7 Router

Exploring the new Era of Home Wi-Fi



Archer BE7200

Superfast Speeds
7.2 Gbps Dual-Band Wi-Fi 7[†]

Wi-Fi 7 Multi-Link Operation
Boosted Throughput, Unmatched Reliability[◇]




Multi-Gig Connectivity
1 × 10 Gbps + 1 × 2.5 Gbps WAN/LAN Ports[§]

Multiple Installation Options
Wall Mount, Vertically or Horizontally On Desktop

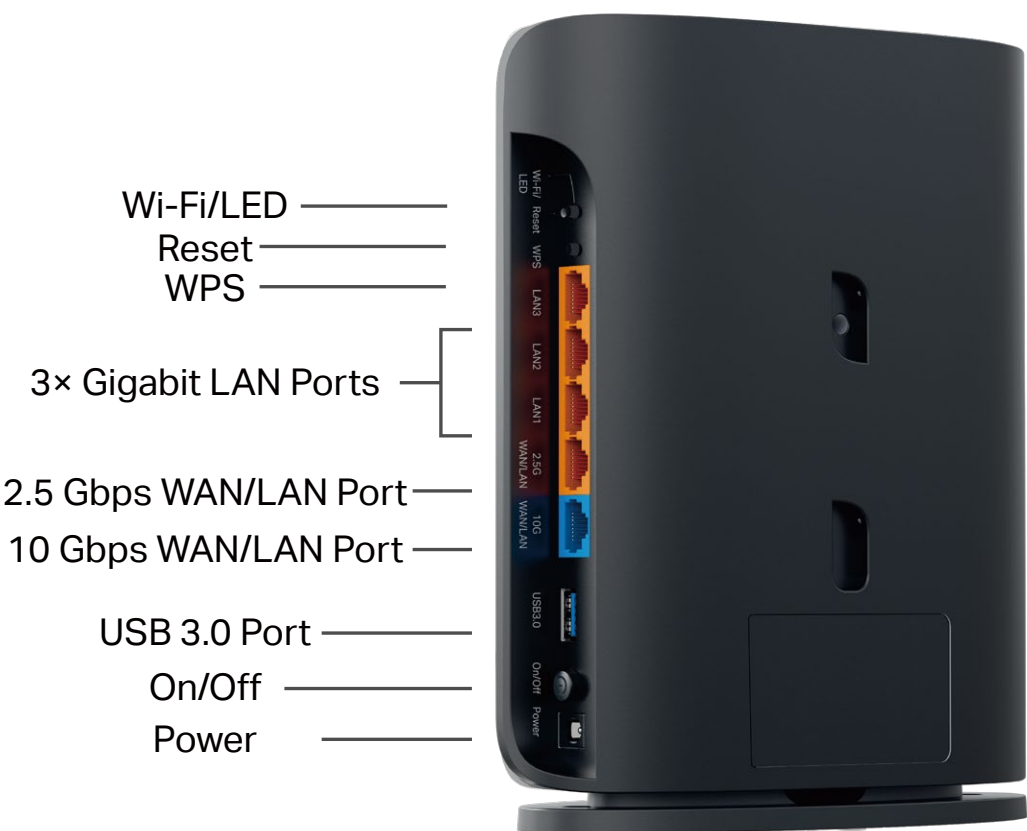
Highlights

Wi-Fi 7 — Wi-Fi Like Never Before



-  **7.2 Gbps Dual-Band Wi-Fi 7[†]**
7.2 Gbps Wi-Fi 7 speeds enables you to enjoy full access to fuent 4K/8K streaming, immersive AR/VR gaming, and blazing-fast downloads.[†]
-  **Lightning-Fast Speeds to Power Your Devices**
Multi-Link Operation (MLO) enables Archer BE7200 to transmit data with Wi-Fi 7 clients across the 5 GHz band and the 2.4 GHz band simultaneously, offering higher speed, lower latency, and more reliability.
-  **Higher Capacity for More Devices[†]**
Communicates with multiple devices via 4 streams and dual-band simultaneously. Combined with the powerful CPU, Wi-Fi 7 provides congestion-free signals to your laptop, TV, thermostat, and baby monitor.

Archer BE7200 — Exploring the new Era of Home Wi-Fi



- 10 Gbps Multi-Gigabit Wired Connectivity**
Experience lightning-speed connectivity with a 10 Gbps port and a 2.5 Gbps port, maximizing Gigabit+ speeds delivered by your internet provider. Break through the 1G bottleneck and unleash peak performance.[§]
- Far-Reaching Wi-Fi Coverage**
5× high-performance external antennas, proprietary Wi-Fi optimization, and Beamforming technology deliver broader coverage, more capacity, stronger and more reliable connections, and less interference.

Highlights

Enhanced Security

Keep your home network safe by preventing potential threats and security issues. Manage online time and block inappropriate content to keep your family safe online with Parental Controls.



Easy Network Management

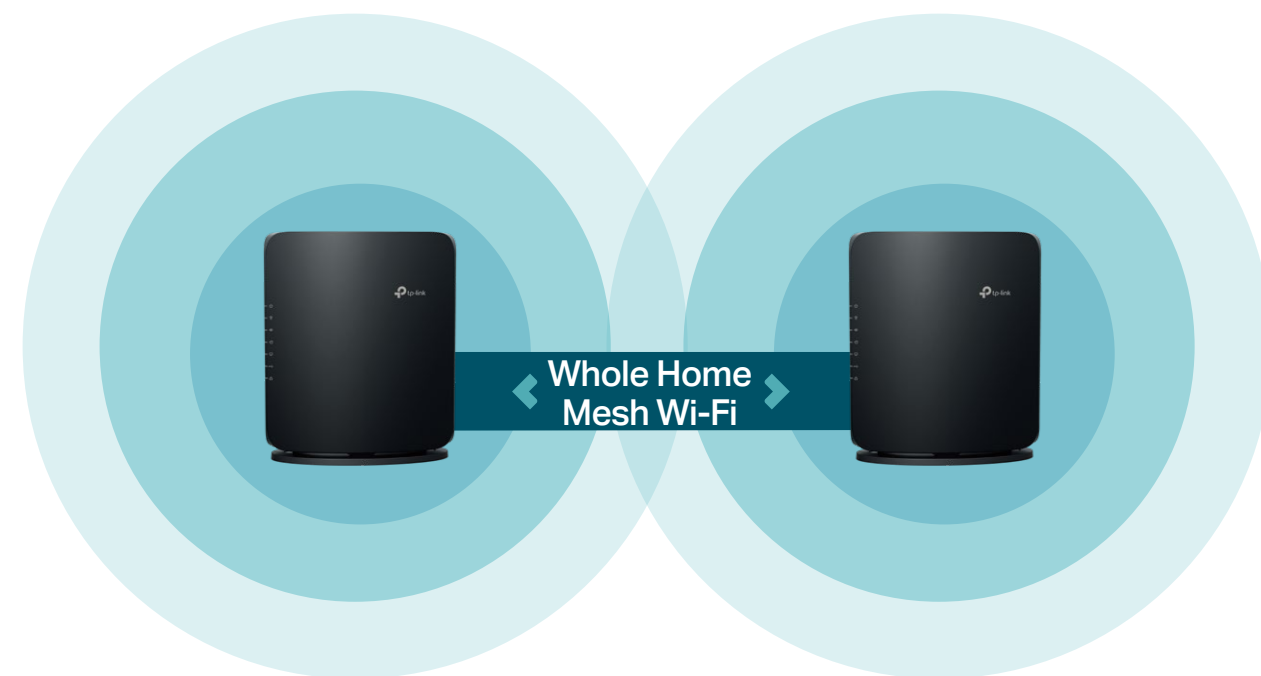
The TP-Link Tether app provides a simple and intuitive way to set up, manage, and monitor your network at home or on the go.



Highlights

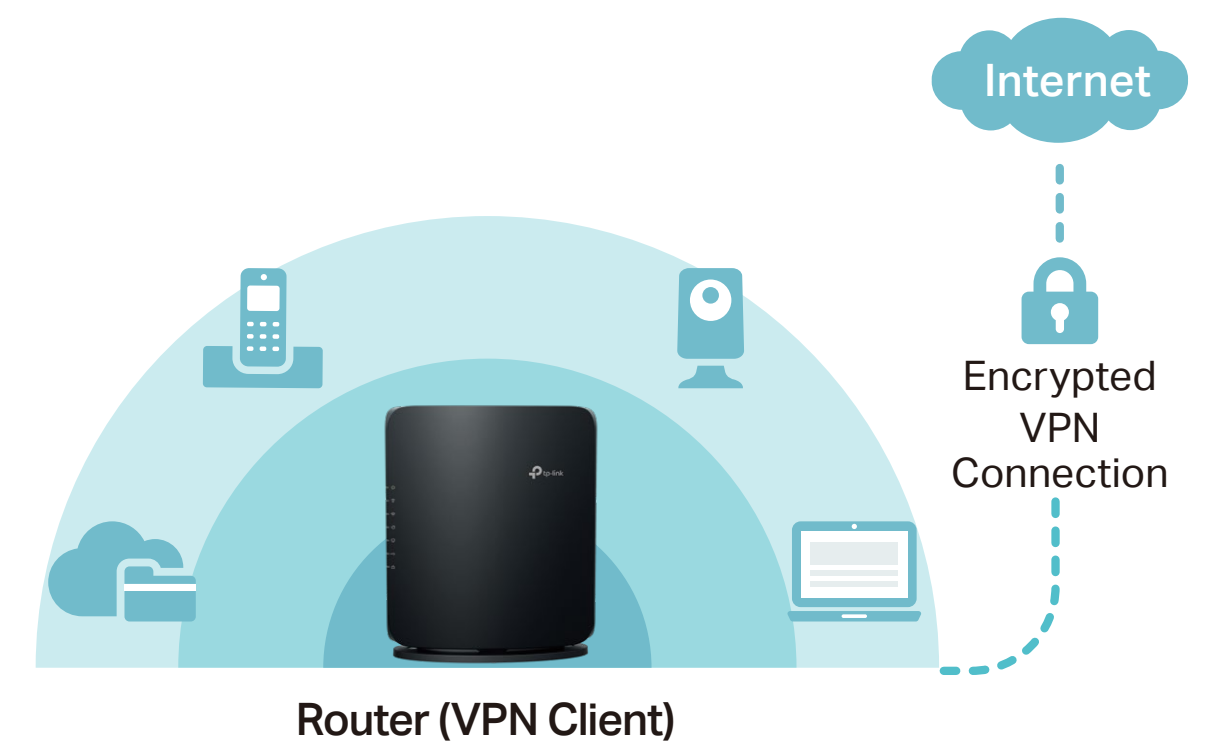
Flexible Whole Home Wi-Fi

Internal high-performance antennas and Beamforming technology deliver broad Wi-Fi coverage. Need more coverage? Easily form seamless whole-home mesh Wi-Fi with EasyMesh.***



VPN Client Support

Allows specified devices in your home network to access remote VPN servers without needing to install VPN software on every device.

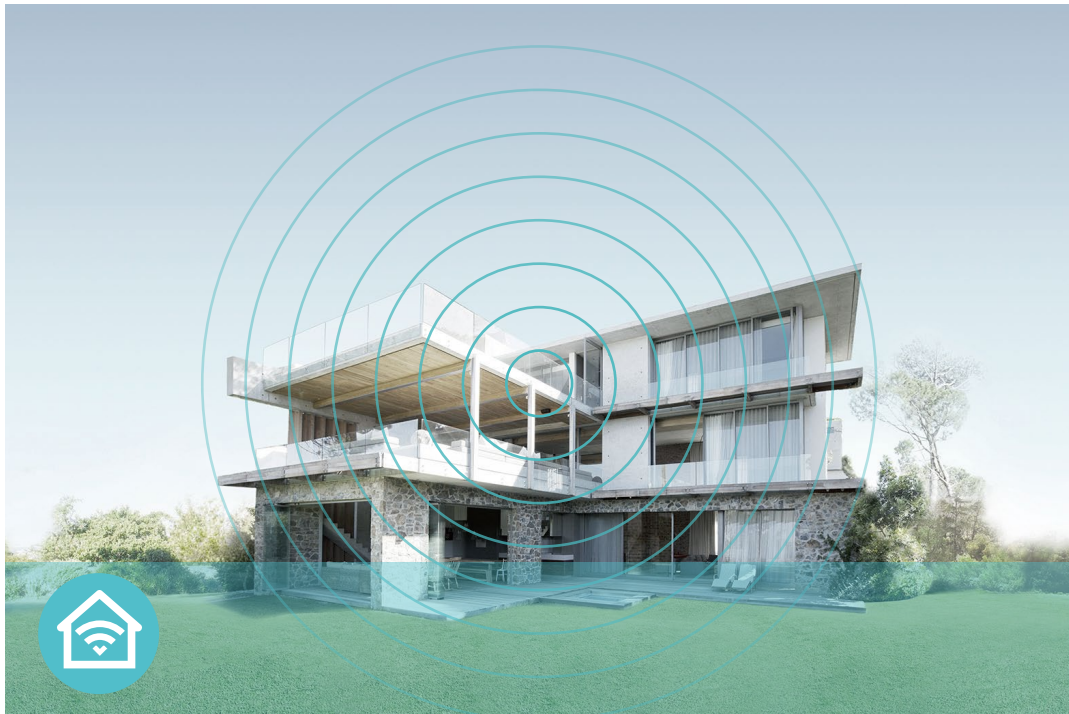


Features



Ultra-Fast Speed

- BE7200 Wi-Fi – Up to 7,140 Mbps dual-band Wi-Fi 7 enables gaming, streaming and high-speed downloading on multiple devices—all at the same time[†]
- 10G Multi-Gig Port – 1× 10 Gbps WAN/LAN Port + 1× 2.5 Gbps WAN/LAN Port + 3× 1 Gbps LAN Ports ensure max flexibility and boosted throughput.
- Wi-Fi 7 – Wi-Fi 7 (802.11be) features advanced technology 4K QAM, drastically increasing the speed and efficiency of your entire network.◇
- Smart Connect – Intelligently assigns each device to the best Wi-Fi band for optimal performance.



Broad Wi-Fi Range

- Ultimate Range Wi-Fi – Proprietary WiFi optimization and 5x high-performance external antennas boost WiFi signals throughout your home.
- Beamforming Technology – Concentrates Wi-Fi signals towards individual devices to ensure stronger connections.
- Seamless EasyMesh network – Transfer between seamless whole-home Wi-Fi without any drops or lag and manage your whole network using a centralized panel.



Reliable Connections

- 7,140 Mbps Dual-Band WiFi 7 – Enables your devices to run at full speed. Enjoy fluent 4K/8K streaming, immersive AR/VR gaming, and blazing-fast downloads.[†]

Features



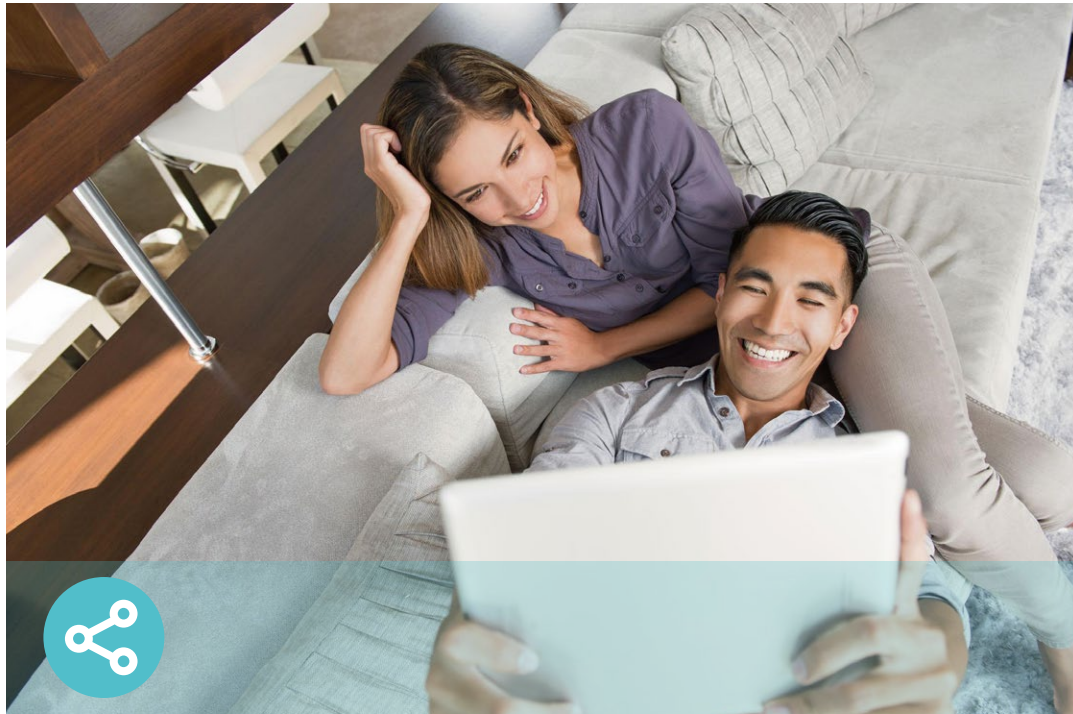
Ease of Use

- Hassle-free Management with Tether App – Network management is made easy with the TP-Link Tether app, available on any Android and iOS device.
- Intuitive Web UI – Ensures quick and simple installation without hassle.
- WPS (Wi-Fi Protected Setup) – Help you to quickly and securely connect your devices to the router's network with a tap.
- Backwards Compatible – Take your Wi-Fi to the next level while being backwards compatible with existing 802.11a/b/g/n/ac/ax Wi-Fi standards.
- Works with Google Assistant – Utilize Google Assistant to control everything via voice commands to enjoy truly intelligent life.



Robust Security

- HomeShield – TP-Link's premium security services keep your home network safe with cutting-edge features for network and IoT protection.**
- Parental Controls – Manage online time and block inappropriate content to control your family's digital habits.
- Guest Network – Provides separate access for guests to secure the home network.
- Advanced WPA3 Encryptions – The latest WiFi security protocol, WPA3, brings new capabilities to improve cybersecurity in personal networks.*
- Access Control – Establishes an allow list or a deny list to allow or restrict certain devices to access the internet.



Value-Added Features

- VPN Clients and Server Supported – With VPN client support, BE7200 allows specified devices in your home network to access remote VPN servers without needing to install VPN software on every device.
- USB Port – Connects external storage devices to rapidly share files, photos, and videos.
- Built-in Media Server – Allows you to play music, watch videos and view photos from any device on your network.
- More Values – Advanced functions like IPTV, IPv6 compatibility, and Access Point mode bring more values.

Specifications

Wireless

- Standards: IEEE 802.11be/ax/ac/n/a 5 GHz, IEEE 802.11be/ax/n/g/b 2.4 GHz
- WiFi Speeds: 5764 Mbps (5 GHz) + 1376 Mbps (2.4 GHz)†
- WiFi Range: 5× High-Performance Antennas
- WiFi 7 Features: Multi-Link Operation (MLO), 4K-QAM, and Multi-RUs◇
- Working Modes: Router Mode, Access Point Mode

Hardware

- Ethernet Ports: 1× 10 Gbps WAN/LAN Port + 1× 2.5 Gbps WAN/LAN Port + 3× 1 Gbps LAN Ports§
- USB Support: 1× USB 3.0 Port
- Buttons: Power On/Off Button, Reset Button, WPS Button, Wi-Fi/LED Button

Security

- WiFi Encryption: WPA, WPA2, WPA3, WPA/WPA2-Enterprise (802.1x)
- Network Security: SPI Firewall, Access Control, IP & MAC Binding, Application Layer Gateway, HomeShield Security
- Guest Network: 5GHz Guest Network, 2.4 GHz Guest Network
- VPN Server: OpenVPN, PPTP, L2TP, Wireguard VPN Server
- VPN Client: OpenVPN, PPTP, L2TP, Wireguard VPN Client

Software

- Protocols: IPv4, IPv6
- Service Kits: HomeShield
- EasyMesh: Supported
- Parental Controls: HomeShield Parental Controls
- WAN Types: Dynamic IP, PPPoE, Transix, Xpass, v6 Connect, v6plus, OCN Virtual Connect, IPv6 Option, Other DS-Lite, Static IP, PPTP, L2TP
- Quality of Service: QoS by Device
- Cloud Service: Auto Firmware Upgrade, TP-Link ID, DDNS
- NAT Forwarding: Port Forwarding, Port Triggering, DMZ, UPnP
- DDNS: TP-Link, NO-IP, DynDNS

Specifications

Physical

· Dimensions: 7.9 x 6.9 x 2.3 in (200 × 176 × 59 mm)

· Package Contents:

Wi-Fi 7 Router Archer BE7200

Mounting Bracket

Power Adapter

RJ45 Ethernet Cable

Quick Installation Guide

Other

· System Requirements:

Microsoft Edge, Firefox, Chrome, Safari, or other
JavaScript-enabled browser

*You are recommended to use the latest version

Cable or DSL Modem (if needed)

Subscription with an internet service provider (for internet access)

· Certifications: JPA, JRF, VCCI, RoHS

· Environment:

Operating Temperature: 0°C~40°C (32°F ~104°F)

Operating Humidity: 10%~90% non-condensing

Test Data

· WiFi Transmission Power:

JP: 2.4GHz≤15dBm, 5G ≤15dBm

· WiFi Reception Sensitivity:

2.4 GHz:

11ax HE20 MCS0: -97dBm, 11ax HE20 MCS11: -66dBm

11ax HE40 MCS0: -95dBm, 11ax HE40 MCS11: -63dBm

11be EHT20 MCS13: -59dBm, 11be EHT40 MCS13: -57dBm

5 GHz:

11ax HE20 MCS0: -96dBm, 11ax HE20 MCS11: -66dBm

11ax HE40 MCS0: -94dBm, 11ax HE40 MCS11: -64dBm

11ax HE80 MCS0: -91dBm, 11ax HE80 MCS11: -61dBm

11ax HE160 MCS0: -88dBm, 11ax HE160 MCS11: -58dBm

11be EHT20 MCS13: -59dBm, 11be EHT40 MCS13: -57dBm

11be EHT80 MCS13: -55dBm, 11be EHT160 MCS13: -52dBm

©2024 TP-Link
[†]Maximum wireless signal rates are the physical rates derived from IEEE Standard 802.11 specifications. Actual wireless data throughput, wireless coverage, and connected devices are not guaranteed and will vary as a result of internet service provider factors, network conditions, client limitations, and environmental factors, including building materials, obstacles, volume and density of traffic, and client location.
[‡]Lower Latency refers to the latency improvement of Wi-Fi 7 routers compared to Wi-Fi 6/6E routers, based on laboratory test data. The test conditions had the same 5 GHz or 2.4 GHz single-frequency wireless interference and tested the maximum latencies of Wi-Fi 7 clients (with MLO turned on) connecting to the 5 GHz and 2.4 GHz bands of Archer BE7200 (with MLO turned on) simultaneously and to the 5 GHz or 2.4 GHz bands of a Wi-Fi 6/6E router (without the MLO function).
[§]Higher capacity and lower latency refers to the capacity and latency improvement of Wi-Fi 7 routers compared to Wi-Fi 6/6E routers, based on laboratory test data.
^{§1}10 Gbps and 2.5 Gbps internet speeds require compatible service plans and equipment. Actual network speed may be limited by the rate of the product's Ethernet WAN or LAN port, the rate supported by the network cable, internet service provider factors, and other environmental conditions.
^{*}Use of WPA3 requires clients to also support the corresponding feature.
[◇]Use of Wi-Fi 7 (802.11be), Wi-Fi 6 (802.11ax), and features including Multi-Link Operation (MLO), 4K-QAM, Multi-RUs, OFDMA, and MU-MIMO requires clients to also support the corresponding features.
^{*}Wi-Fi generations represent the wireless standard IEEE 802.11 a/b/g/n/ac/ax/be. All devices need to support 802.11 Wi-Fi protocols. Users may require an extra modem device that is compatible with their internet service provider to gain internet access.
^{**}HomeShield includes both basic and advanced features. Advanced features require a paid subscription. For details, visit tp-link.com/homeshield
^{***}TP-Link EasyMesh-compatible products can network with other devices that use EasyMesh. Failed connections may be due to firmware conflicts of different vendors. The EasyMesh-compatible function is still being developed on some models and will be supported in subsequent software updates.
This router may not support all the mandatory features as ratified in the IEEE 802.11be specification.
Further software upgrades for feature availability may be required.
Pictures are for reference only. If there are any inconsistencies between the product image and the actual product, the actual product shall prevail.